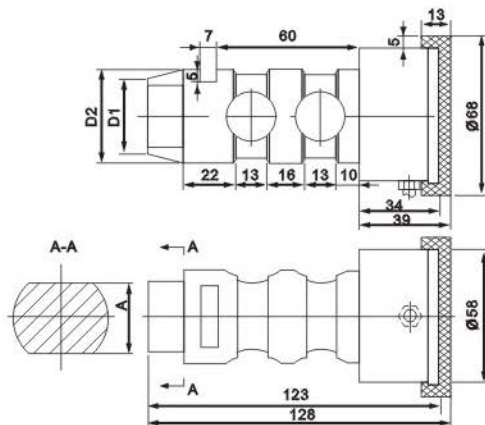




量程(t) Capacity	D1	D2	A
0.75~2	φ 28	φ 36	26
2.5, 3	φ 32	φ 40	30
4.5	φ 42	φ 50	36



Every kinds of safe limiter

## TECHNICAL PARAMETER

[OAP version 4Wires:Exc+(Blue);Exc-(Black);Sig+(White);Sig-(Red)]

Rated capacities(Emax)	0.75,1,1.5,2,2.5,3,4,5t	Temperature range, compensated	-10°C~+40°C
<b>Sensitivity</b>	1.0±0.01mV/V(0.75~4t),0.7±0.01mV/V ( 5t )	Temperature range, operating	-30~+70°C
<b>Total error</b>	±0.5%F.S	Maximum safe overload	120%F.S
(30)Creep error (30min)	±0.05%F.S	Ultimate overload	150%F.S
<b>Zero balance</b>	±1%F.S	Excitation, recommend	10~12V DC
<b>TCO</b>	±0.02%F.S/10°C	Excitation, maximum	15V DC
<b>TC SPAN</b>	±0.02%F.S/10°C	Protection class	IP67
<b>Input resistance</b>	750±10Ω	Construction	Alloy Steel
<b>Output resistance</b>	702±3Ω	<b>Cable</b>	Length=4m
<b>Insulation resistance</b>	≥5000MΩ		Diameter: φ 5mm