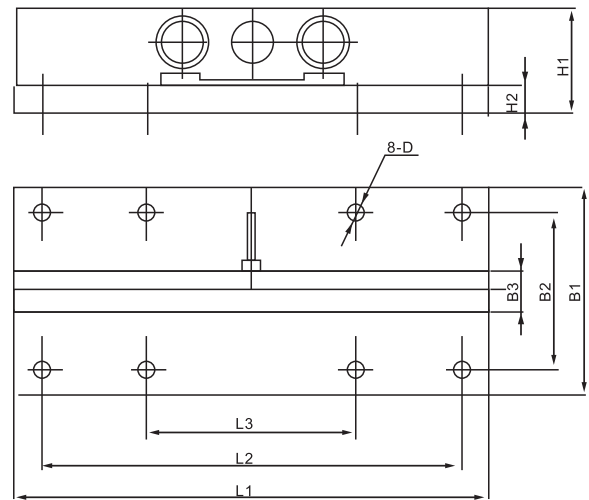
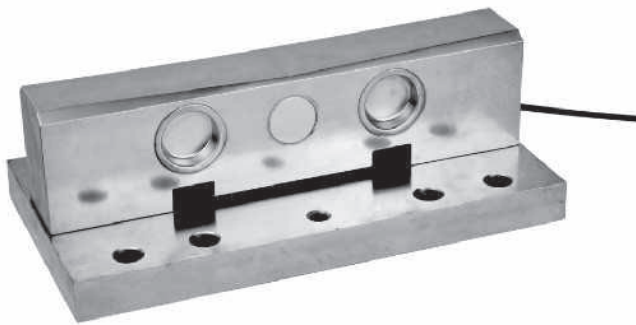


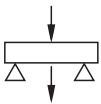


GG-A Loadcell

GG-A



	(t)	L1	L2	L3	B1	B2	B3	H1	H2	D
11kg/m	2	362	320	160	160	120	32	80.5	22	φ 13
15kg/m	5~10	382	286	168	135	90	37	91	25	φ 17
18kg/m	5~10	382	286	168	135	90	40	90	25	φ 17
24kg/m	10~15	382	286	168	200	150	51	107	31	φ 22
38kg/m	5~50	402	305	185	220	170	68	134	34	φ 22
43kg/m	10~50	402	305	185	220	170	70	140	34	φ 22
50kg/m	20~60	502	425	280	220	160	70	152	48	φ 26
Qu100	40~60	452	350	200	260	200	108	150	48	φ 28
Qu120	50~60	452	350	200	280	220	129	170	48	φ 28



Static steel embody scale railway scale overhead crane scale

TECHNICAL PARAMETER | OAP version 4Wires:Exc+(Blue);Exc-(Black);Sig+(White);Sig-(Red)

Rated capacities(Emax)	2,5,10,15,20,30,40,50,60t	Temperature range, compensated	-10°C~+40°C
Sensitivity	1.0±0.005mV/V(2~10t);1.5±0.005mV/V(15~60t)	Temperature range, operating	-30~+70°C
Total error	±0.1%F.S(2~20t);±0.2%F.S(30~60t)	Maximum safe overload	150%F.S
Creep error (30min)	±0.05%F.S	Ultimate overload	250%F.S
Zero balance	±1%F.S	Excitation,recommended	10~12V DC
TC ZERO	±0.05%F.S/10°C	Excitation,maximum	15V DC
TC SPAN	±0.05%F.S/10°C	Protection class	IP68
Input resistance	750±10Ω	Construction	Alloy Steel
Output resistance	702±3Ω	Cable	Length:20m
Insulation resistance	≥5000MΩ		Diameter: φ 6mm