

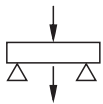
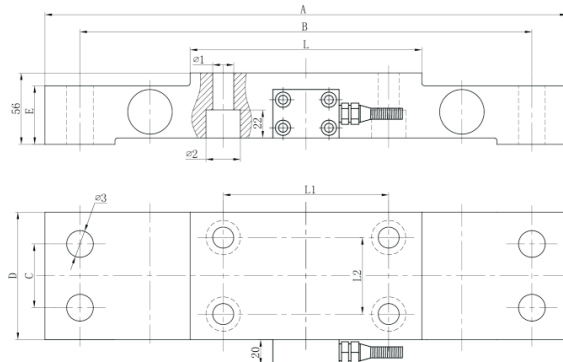


BTW-A Loadcell

BTW-A



规格代号	BTW-AX1.5t	BTW-AX2.5t	BTW-AX4-10t
A	350	410	410
B	310	355	355
C	38	50	50
D	75	100	100
E	46	44.5	46
L	151	181	211
L1	100	130	160
L2	40	60	60
01	017.5	017.5	017
02	028	028	027
03	018	022	021.5



Lifting Weight Limiter

TECHNICAL PARAMETER | OAP version 4Wires:Exc+(Blue);Exc-(Black);Sig+(White);Sig-(Red)

Rated capacities(Emax)	1.5,2.5,4.5,7.5,10t	Temperature range, compensated	-10°C~+40°C
Sensitivity	1.2±0.002mV/V	Temperature range, operating	-30~+70°C
Total error	±0.2%F.S	Maximum safe overload	150%F.S
Creep error (30min)	±0.05%F.S	Ultimate overload	250%F.S
Zero balance	±1%F.S	Excitation, recommended	10~12V DC
TC ZERO	±0.03%F.S/10°C	Excitation, maximum	15V DC
TC SPAN	±0.03%F.S/10°C	Protection class	IP68
Input resistance	750±10Ω	Construction	Alloy Steel
Output resistance	702±3Ω	Cable	Length:2m
Insulation resistance	≥5000MΩ		Diameter: φ 6mm