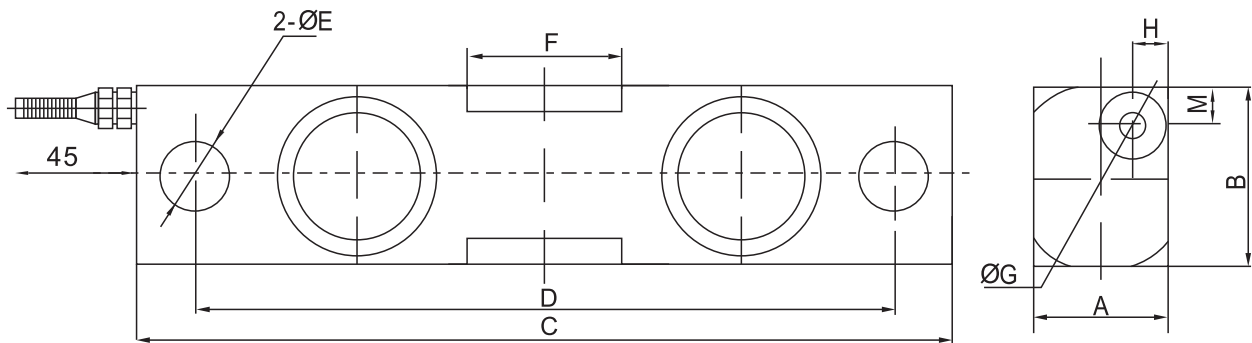


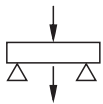


QSF-A/-ASS Loadcell

QSF-A/-ASS



Rated Load(klb)	A	B	C	D	E	F	G	H	M
2-5	31	31	190.5	159.1	12.7	30.5	31.5	8	6.5
10-35	36.6	48.5	222	190.5	19	42	50.6	10	9.5



Truck scale, railway scale, axle-load scale, floor scale, warehouse scale

TECHNICAL PARAMETER | OAP version 4Wires:Exc+(Blue);Exc-(Black);Sig+(White);Sig-(Red)

Rated capacities(Emax)	2,2.5,3.5,10,25,35klb	Temperature range, compensated	-10°C~+40°C
Sensitivity	3.0±0.005mV/V	Temperature range, operating	-30~+70°C
Total error	±0.03%F.S; ±0.05%F.S; ±0.1%F.S (Stainless Steel)	Maximum safe overload	150%F.S
Creep error (30min)	±0.02%F.S	Ultimate overload	250%F.S
Zero balance	±1%F.S	Excitation, recommended	10~12V DC
TC ZERO	±0.02%F.S/10°C	Excitation, maximum	15V DC
TC SPAN	±0.02%F.S/10°C	Protection class	IP68
Input resistance	750±10Ω	Construction	Alloy Steel Stainless Steel
Output resistance	702±3Ω	Cable	Length=6m(2~5klb), 10m(10~35klb)
Insulation resistance	≥5000MΩ		Diameter: φ5mm(2~5klb), φ6mm(10~35klb)