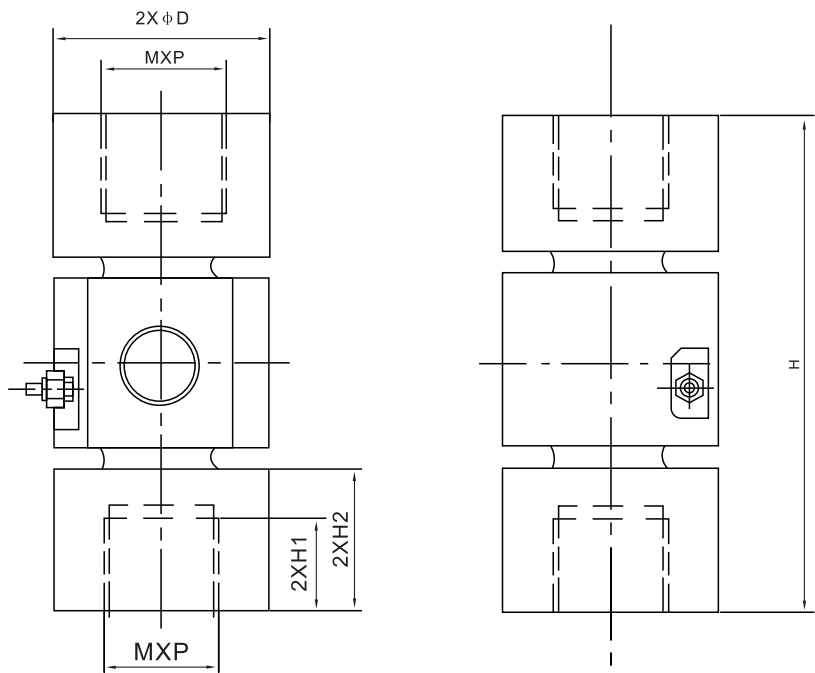




**ZSMCB-A Loadcell**

**ZSMCB-A**



(t)	H	H1	H2	φ D	MXP
20	185	38	57	78	M42x3
30,40	225	50	77	105	M56x3



Big crane equipment, testing machine

**TECHNICAL PARAMETER** | OAP version 4Wires:Exc+(Blue);Exc-(Black);Sig+(White);Sig-(Red)

Rated capacities(Emax)	20,30,40t	Temperature range, compensated	-10°C~+40°C
Sensitivity	2.0±0.005mV/V	Temperature range, operating	-30~+70°C
Total error	±0.2%F.S	Maximum safe overload	120%F.S
Creep error (30min)	±0.05%F.S	Ultimate overload	150%F.S
Zero balance	±1%F.S	Excitation,recommended	10~12V DC
TC ZERO	±0.02%F.S/10°C	Excitation,maximum	15V DC
TC SPAN	±0.02%F.S/10°C	Protection class	IP68
Input resistance	400±20Ω	Construction	Alloy Steel
Output resistance	352±3Ω	Cable	Length:12m
Insulation resistance	≥5000MΩ		Diameter: φ 6mm