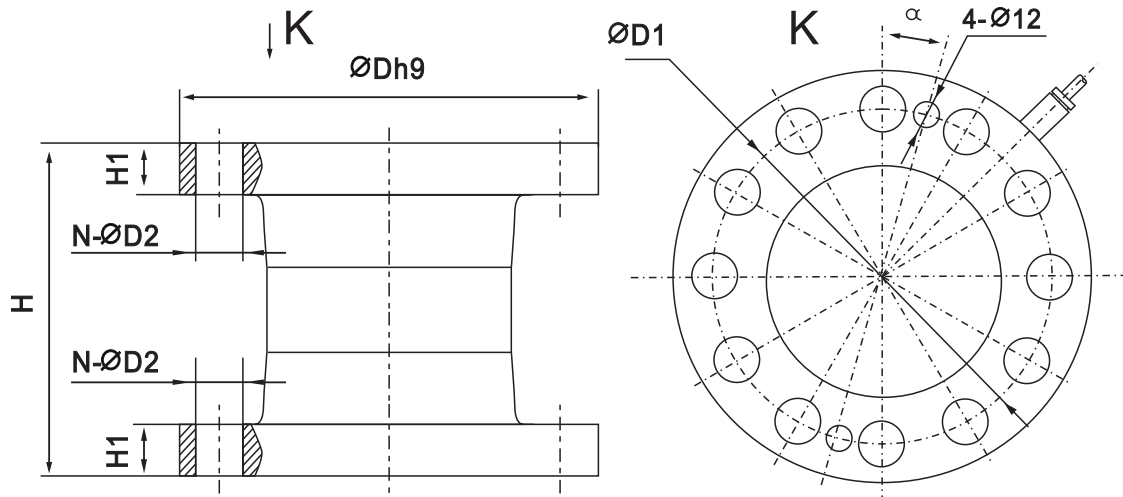
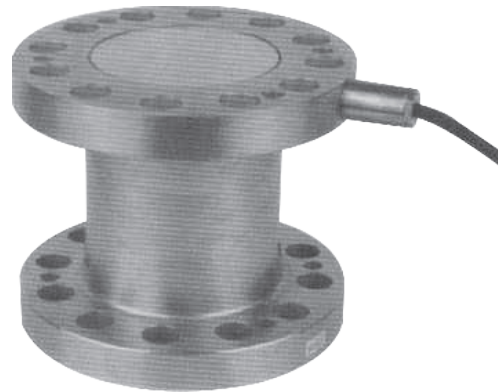




ZSP-A Loadcell

ZSP-A



Tension testing situation, testing machine

(t)	H	H1	D	D1	NX φ D2	α
40-60	160	25	197	160	12x φ 22	15°
100	230	40	240	200	12x φ 26	15°
150-200	326	57	305	250	12x φ 33	15°
300	358	69	415	360	18x φ 33	10°

TECHNICAL PARAMETER | OAP version 4Wires:Exc+(Blue);Exc-(Black);Sig+(White);Sig-(Red)

Rated capacities(Emax)	40,50,60,100,150,200,300t	Temperature range, compensated	-10°C~+40°C
Sensitivity	2.0±0.01mV/V	Temperature range, operating	-30~+70°C
Total error	±0.3%F.S	Maximum safe overload	150%F.S
Creep error (30min)	±0.05%F.S	Ultimate overload	200%F.S
Zero balance	±1%F.S	Excitation,recommended	10~12V DC
TC ZERO	±0.03%F.S/10°C	Excitation,maximum	15V DC
TC SPAN	±0.03%F.S/10°C	Protection class	IP67
Input resistance	750±10Ω	Construction	Alloy Steel
Output resistance	702±3Ω ;702±5Ω (C≥15m)	Cable	Length:14m(40~100t),20m(150~300t)
Insulation resistance	≥5000MΩ		Diameter: φ 8mm