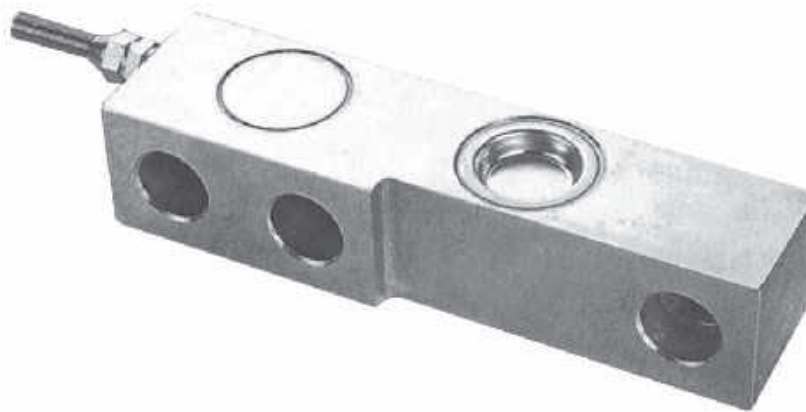


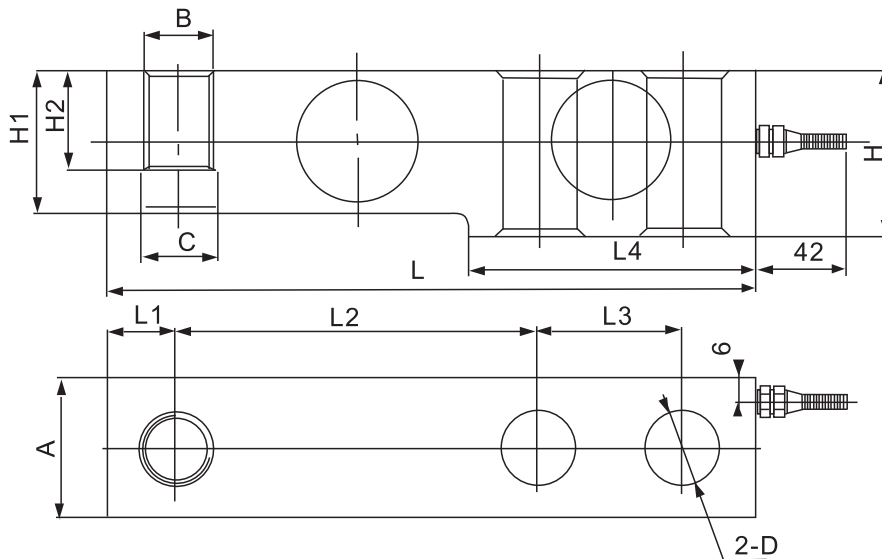


SBZ/SBZ-A Loadcell

SBZ/SBZ-A



Rated Load(t)	L	L1	L2	L3	L4	A	B	C	D	H	H1	H2
0.5,1,2	132	14.7	76.2	25.4	56.5	32	M12	φ 13.8	φ 13.5	33.5	31.5	15.7
3,5	171.5	19	95.3	38.1	76.2	38	M18x15	φ 20	φ 20	44.5	38	26



Floor scale,blending scale, platform scale

TECHNICAL PARAMETER | OAP version 4Wires:Exc+(Blue);Exc-(Black);Sig+(White);Sig-(Red)

Rated capacities(Emax)	0.5,1,2,3,5t	Temperature range, compensated	-10°C~+40°C
Sensitivity	2.0±0.002mV/V	Temperature range, operating	-30~+70°C
Total error	±0.03%F.S;±0.05%F.S	Maximum safe overload	150%F.S
Creep error	±0.03%F.S	Ultimate overload	200%F.S
Zero balance	±1%F.S	Excitation,recommended	10~12V DC
TC ZERO	±0.02%F.S/10°C	Excitation,maximum	15V DC
TC SPAN	±0.02%F.S/10°C	Protection class	IP67(0.5t);IP68(1~5t)
Input resistance	400±20Ω	Construction	Alloy Steel
Output resistance	352±2Ω	Cable	Length:3m(0.5~2t),5m(3t),6m(5t)
Insulation resistance	≥5000MΩ		Diameter: φ 5mm