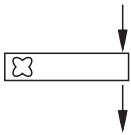
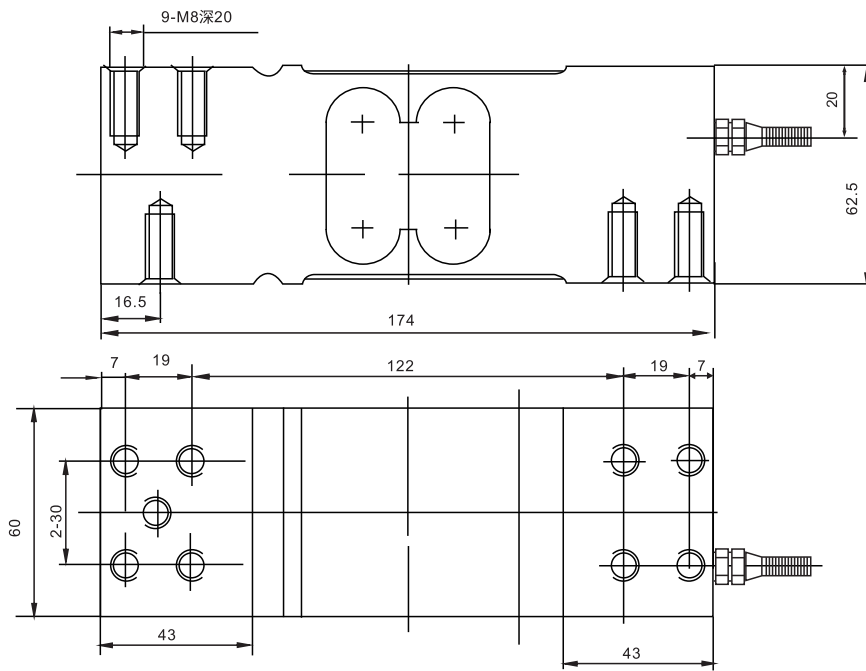
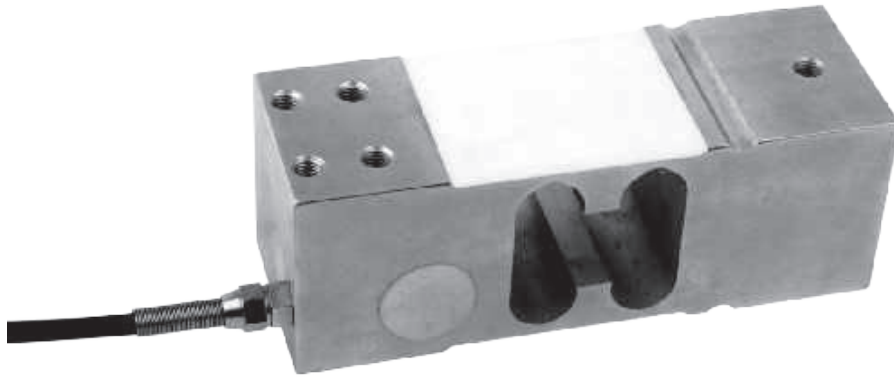




ILEB Loadcell

ILEB



Blending scale, packing scale, dynamic testing system, platform scale

TECHNICAL PARAMETER | OAP version 4Wires:Exc+(Blue);Exc-(Black);Sig+(White);Sig-(Red)

| | | | |
|------------------------|---|--------------------------------|-----------------|
| Rated capacities(Emax) | 50, 100, 150, 200, 250, 300, 500, 800, 1000kg | Temperature range, compensated | -10°C~+40°C |
| Sensitivity | 2.0±0.2mV/V | Temperature range, operating | -30~+70°C |
| Total error | ±0.03%F.S | Maximum safe overload | 150%F.S |
| Creep error (30min) | ±0.03%F.S | Ultimate overload | 200%F.S |
| Zero balance | ±1%F.S | Excitation, recommended | 10~12V DC |
| TC ZERO | ±0.02%F.S/10°C | Excitation, maximum | 15V DC |
| TC SPAN | ±0.02%F.S/10°C | Protection class | IP65 |
| Input resistance | 400±20Ω | Construction | Alloy Steel |
| Output resistance | 352±2Ω | Cable | Length:3m |
| Insulation resistance | ≥5000MΩ | | Diameter: φ 5mm |