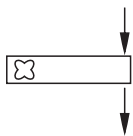
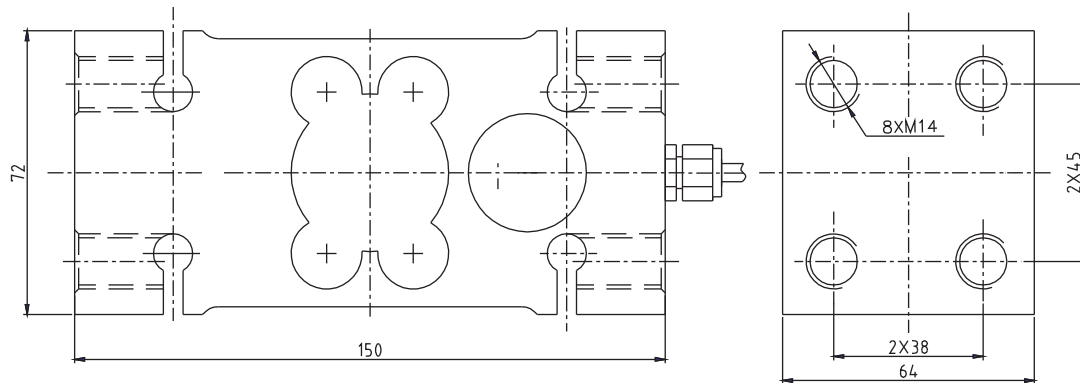
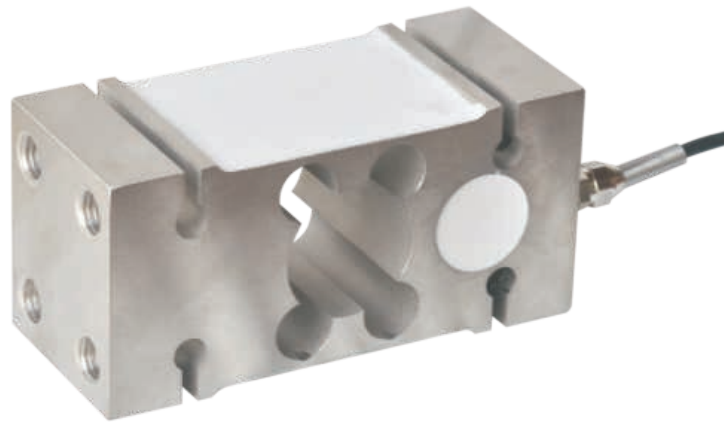




**IL Load cell**

**IL**



Blending scale, packing scale, dynamic testing system, platform scale

**TECHNICAL PARAMETER** OAP version 4Wires:Exc+(Blue);Exc-(Black);Sig+(White);Sig-(Red)

Rated capacities(Emax)	50,100,150,200,250,300,500,750Kg 1t,2t	Temperature range, compensated	≥2000MΩ (50V DC)
Sensitivity	20±0.2mV/V	Temperature range, operating	-20~+50°C
Accuracy class	OIML C3	Maximum safe overload	150%F.S
Creep (30min)	±166ppm	Ultimate overload	300%F.S
Zero balance	±3%Emax	Excitation, recommended	10V DC
TC ZERO	±17.5ppm/°C	Excitation, maximum	15V DC
TC SPAN	+20°C~+40°C, ±17.5ppm/°C	Protection class	IP65
	-10°C~+20°C, ±11.67ppm/°C	Construction	Alloy Steel
Input resistance	382 ± 15 Ω	Cable	Length:3m
Output resistance	50 ± 3 Ω		Diameter: φ 5mm
Max platform size	800 × 800mm	Installation torque, commended	35N · m