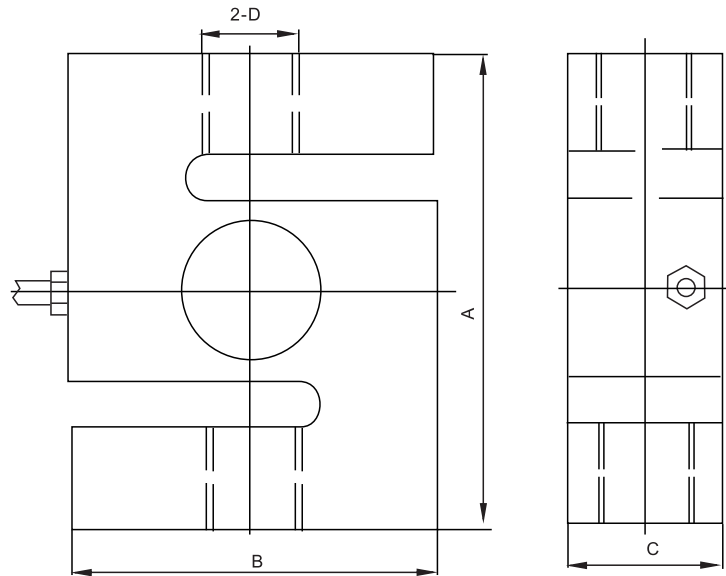
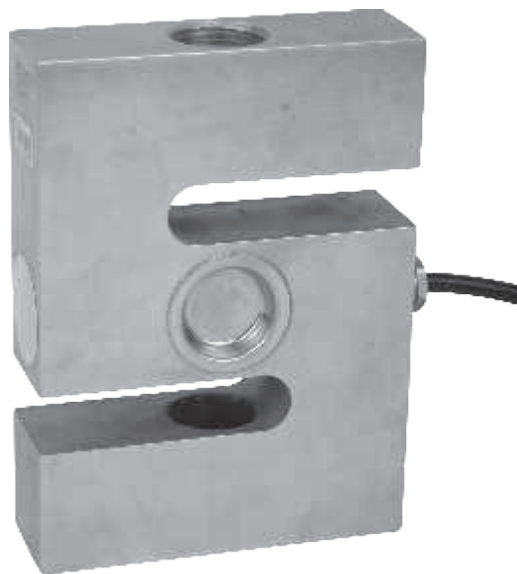


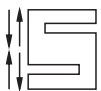


DEGYB-A Loadcell

DEGYB-A



Rated Load (klb)	A	B	C	D
10	101.6	76.2	25.4	3/4-16UNF-2B
15	139.7	101.6	31.8	1-14UNS-2B



Crane scale, belt scale, blending system

TECHNICAL PARAMETER

OAP version 4Wires:Exc+(Blue);Exc-(Black);Sig+(White);Sig-(Red)

Rated capacities(Emax)	10,15klb	Temperature range, compensated	-10°C~+40°C
Sensitivity	3.0±0.003mV/V	Temperature range, operating	-30~+70°C
Total error	±0.03%F.S	Maximum safe overload	120%F.S
Creep error (30min)	±0.03%F.S	Ultimate overload	150%F.S
Zero balance	±1%F.S	Excitation, recommended	10~12V DC
TC ZERO	±0.03%F.S/10°C	Excitation, maximum	15V DC
TC SPAN	±0.03%F.S/10°C	Protection class	IP68
Input resistance	400±5Ω	Construction	Alloy Steel
Output resistance	352±3Ω	Cable	Length:8m
Insulation resistance	≥5000MΩ		Diameter: φ 5.4mm

Keli CEE

ul. Przeskok 53
63-400 Ostrów Wielkopolski

tel./fax. +48 62 592 42 78
e-mail: info@keli-cee.pl

www.keli-cee.pl